



# SAUVIE ISLAND YACHT CLUB NEWSLETTER

P. O. Box 2524, Portland, OR 97208-2524

[www.siyc.org](http://www.siyc.org)

No. 340, May, 2013

## SIYC OFFICERS '13-'14

Commodore  
Craig Johnston

Vice Commodore  
Mark Nerczuk

Secretary  
Sue Stonecliffe

Treasurer  
George Stonecliffe

Rear Commodore  
George Stonecliffe

## COMMITTEE CHAIRS

Membership  
Ed Daugherty

Database Editor  
George Stonecliffe

Newsletter  
Barbara Johnston

Website  
Mark Nerczuk

## *Annual Race Cruise*

There's still time to sign up for SIYC's annual (and only) racing event. Join us in this just slightly competitive trip down the river, or at least for the award ceremony, dinner and companionship on Sand Island afterwards. Details inside at page 2.

May 18-19, 2013



**June 1, 2013:** Annual Picnic, Blue Lake  
See details inside, page 2.

## *Looking ahead*

**July, 2013:** Lifesling Training in the water, July 19-22 (classroom session Tuesday, July 16). See details page 4.

This month's cruising reports start on page 10.

## Commodore's Comments

With four new member boats in 2012, 3 new member boats in 2013, and 3 prospective member boats showing interest at the moment for 2013-2014, SIYC continues to attract members who have interests in learning more about blue water cruising, and nurturing the dream of going cruising on their sailboat. It is heartening to see the enthusiasm of the new members, and to share with them experiences that will help guide their steps forward.

With the May Annual Business Meeting, the new slate of Board Officers has been voted in. Congratulations to Craig Johnston (Commodore), Mark Nerczuk (Vice-Commodore), Sue Stonecliffe (Secretary), and George Stonecliffe (Treasurer & Rear Commodore)!

New membership Rosters are now available, and will be handed out at the Picnic, June 1<sup>st</sup>. Others will receive them by mail.

- George Stonecliffe  
Rear Commodore

**Annual picnic: A companionable gathering at Blue Lake.**

**June 1, 2013, 11 am**

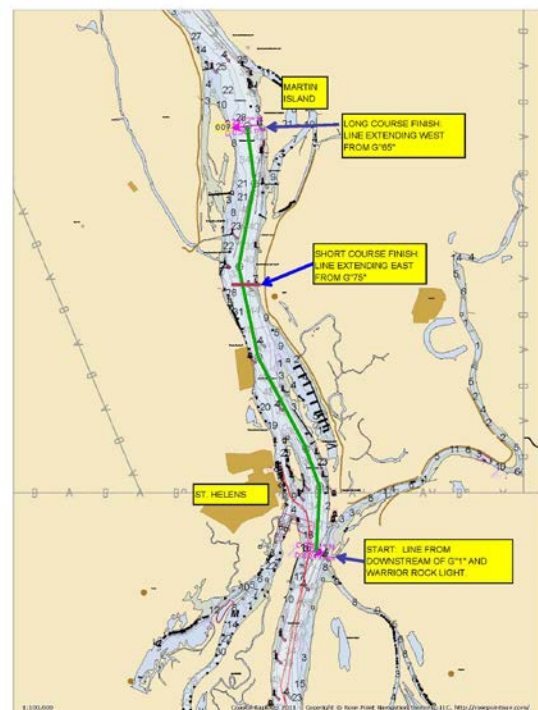


The Annual Picnic will be held on Saturday, June 1<sup>st</sup> at Blue Lake Park from 11:00 am until 3:00 pm. The covered shelter is 'Celilo A'. There is a \$5 entry fee per car into the Park. No pets or alcohol are allowed.

SIYC provides hamburgers, hot dogs, cold soda, plates, cups, napkins, and plastic flatware. Members are asked to bring a side dish/salad or a dessert. If you would like to bring your own meat for grilling, feel free to do so. We will have three grills available.

Directions for Blue Lake Regional Park can be found on [www.oregonmetro.gov/bluelake](http://www.oregonmetro.gov/bluelake) or by calling George Stonecliffe at his cell 503/467-6900.

## Race Cruise: May 18-19



Nick and Gail Wigen and Garry Weber will host the race cruise May 18-19. Racing starts midday on Saturday, at Warrior Rock. You'll need an information packet from Nick, so give him a call if you didn't receive one or need additional information. 503-705-8094. There's a waiver to be signed before you can

participate in the race, but if you have a scanner, you can send it back to Nick by email.

After the race we'll gather at Sand Island (across from downtown St. Helens) for the award ceremony and potluck dinner, overnight moorage and breakfast together the next morning. Members who don't want to race are welcome and encouraged to join us for the after-race activities.



### Reminder: Annual Dues

Your annual dues are now payable. Our new treasurer, George Stonecliffe, will be accepting checks at the club picnic, or you can mail checks to the club at P. O. Box 2524, Portland, OR 97208-2524.

Here are the different classes of membership, and the annual amounts to be paid by each. Membership is per boat, not per person:

Regular membership:	\$50
Life Member	\$-0-
Post Member	\$20
Cruising Member	\$20

**Life Member:** A member who has paid full dues for at least 20 years.

**Post Member:** A member who has paid full dues for at least 5 years and no longer owns a boat, but wishes to stay involved in club activities.

### Cruising Member:

- Has cruised away from Oregon and Washington at least six months during the last fiscal year (April 1-March 31);
- Has paid full regular membership dues for at least two years; and
- Has made at least three newsletter contributions during the last fiscal year.

### Last Month's Cruise: Navigation Cruise



Three club boats deciphered the Navigation Quiz and came to Sand Island off St. Helens. Cambria, Ursa Minor, and Julia Max enjoyed sharing the potluck meals, walking on Sand Island, and overall conversing about the latest topics. The Navigation Quiz focused on the chart of Sauvie Island, and included extra-credit historical questions requiring Google for





research. The weather cooperated to make this cruise a fun, relaxing weekend!

## Going North?

If anyone from SIYC is heading north and dropping by Friday Harbor, members Ken and Ruth Frazee would love to meet with them and give some ideas of where to visit. They know the waters from Friday Harbor up to and including Alaska pretty well, having made five trips to Alaska and a number more toward Prince Rupert. They would be glad to share what they know. Send them an email (address is in the roster). Stop by and have lunch with them in town.

## SIYC Summer Cruise and Lifesling Training: July, 2013



For the first time in years we are planning a July event: training in Man Overboard (MOB) recovery techniques *and* a cruise to a local dock to both practice the

techniques and have a traditional SIYC cruise—but during warm weather for a change. (Apologies for not using gender neutral terminology; the term MOB is widely used in the sailing world, and, besides which, who do *you* think is more likely to wind up in the drink?)

There are new training materials and video available from The Sailing Foundation of Seattle, the creators of the Lifesling, developed in 2010 by a group that included your crusty new Commodore. These are sure to educate folks who have a Lifesling but have never gotten it wet as well as those of us who have had some training but forgotten most of it and could *really* use a refresher on this important safety drill.

Experience has shown that there are four steps to effective MOB recovery training:

1. Classroom instruction in recovery techniques and Lifesling setup and use.
2. Making sure you have the correct gear on your boat.
3. Practicing rigging the Lifesling and hoisting an MOB on deck.
4. Practicing the sailing drill to get back to the MOB and deliver the Lifesling to them.

With that in mind, here is the schedule:

1. **Classroom training on, Tuesday, July 16 at Flightcraft, near PDX, from 6:30-9:30 PM.** We will have a trainer from The Sailing Foundation and will serve a pizza dinner.
2. **An SIYC cruise to Sand Island (near St. Helens) from July 19-22.** (The idea is that you attend on those days that work for you.) On at least Saturday and Sunday we would do two training activities:
  - a. rigging and picking up a live, wet MOB at the dock;
  - b. sailing to nearby waters during the afternoon, for practicing the MOB sailing drill with a dummy MOB in the water.
3. Naturally, there would be the usual group meals, socializing and prizes for the training participants. **All SIYC'ers are invited to the cruise.**

There will be a \$15 per person fee for the training to cover food and the speaker's fee. The initial signup at the May meeting includes 7 boats and 11 people, enough to guarantee the event. We will be offering the training to members of OWSA and others; feel free to add your name to the list and to invite your friends who might be interested, but enrollment will be limited.

This should be an education and entertaining event, better for being in the warm part of the summer. Please direct any questions to Craig

Johnston (503-543-0945). Updated information with directions to the training will be sent by email to all who have signed up. Checks for the \$15/person fee should be sent to George Stonecliffe, Treasurer, [see address in the roster]

closure of navigation buoys for this passage. For any questions contact Marine Safety Unit Portland at 503-240-9310.

## SIYC Clothing & Accessories For 2013

### 'Sport-Tek' Brand

#### Sweatshirts

Pullover, hooded-----\$30.00  
Adult-F254

Zip front, hooded----- \$36.00  
Adult-F258

#### Fleece Jackets

Ladies Zip front, hooded-----\$38.00  
Adult-L265

### 'Port Authority' Brand

Competitor Jacket-----\$42.00  
Wind & water resistant  
Adult-JP54

Wind Jackets-----\$52.00  
Full zip  
Adult-J707  
Ladies-L707

\*\*\* Call Sarah for color choices: **503/774-3381**

\*\*\* A check made out to 'SIYC' needs to accompany orders.

Mail checks to Sarah Daugherty (see roster for mailing address), or give her your order at the next SIYC meeting.

## Cathlamet Channel Navigation Notice

The US Coast Guard – Marine Safety Unit Portland has advised CRYA that the Channel Buoys in Cathlamet Channel (Washington side passage along Puget Island) are removed as maintenance access by 'Bluebell' has become restricted due to shoaling. This is a permanent

## Recipe of the Month Tex-Mex Huevos Rancheros



Sue Stonecliffe sends us this recipe which she has served at a couple of SIYC cruises:

### Tex-Mex Huevos Rancheros

- 2 C refried beans
- 1/2 C sour cream
- 1/4 C salsa
- 1 green pepper sliced
- scallions or green onions
- 4-6 eggs
- cheddar cheese grated
- taco sauce
- green Tabasco Sauce

Simmer first 6 ingredients together in large skillet (square rimmed). Break eggs on top, cover and cook until eggs are set. Serve with grated cheese and taco sauces.

*If you like to cook, please send us your favorite recipe, suitable for preparation aboard, for inclusion as a future recipe of the month!*



## Club Business

### SIYC Membership Meeting

May 3, 2013  
Sauvie Island Academy

The meeting was called to order at 7:30 p.m. by Commodore George Stonecliffe. Other officers present were Rear Commodore Garry Weber, Treasurer David Mangan, and Secretary Sue Stonecliffe.

#### Guests:

Jim and Linda Noval attended their 4<sup>th</sup> meeting. They will become members following their boat inspection by Ed Daugherty next week. Jim and Linda plan to depart for Alaska mid-May so their initiation ceremony will be held at the September meeting.

#### Committee Reports:

**Programs:** The next meeting will be our annual picnic at Blue Lake Park on June 1<sup>st</sup> at 11:00 a.m. with lunch at noon. Entry fee is \$5 in the park. We have reserved a group picnic area on the lake with horseshoe pits and space for other games. Dave Mangan, Ed Daugherty, and Nick Wigen will bring their BBQs for the hamburgers and hot dogs provided by SIYC. Soft drinks will also be provided, but we cannot have alcoholic beverages. Also, please don't drive on the grass, and no pets are allowed in the park.

**Newsletter:** Barbara will skip June and July, resuming in August for the remainder of the year.

**Refreshments:** George sent around a sign-up sheet for 2013-14.

**Roster:** George handed out new rosters to all those present. Additional rosters will be handed out at the Picnic, and then mailed to those who haven't attended. It was suggested that in the future, the .pdf file be e-mailed to all members, who could then print out their own copy rather than spending the money on the printing. Putting this information on the web-site was also discussed.

**Cruises:** 3 boats came to the Navigation Cruise at Sand Island: Julia Max, Ursa Minor, and Cambria. Prizes purchased but not given (due to the small turnout) were saved for tonight's raffle.

Nick and Gail Wigen and Garry Weber will host the race cruise May 18-19. Nick handed out the race packets. Call Nick if you didn't receive one or need additional information. Everyone will gather afterwards at Sandy Island for the award ceremony and potluck dinner.

The next cruise will be a Lifesling training, July 19-22, tying up at Sand Island (St. Helens) for practice retrieving a live person from the water adjacent to the dock. There will also be open water practice at retrieving a buoy with the Lifesling equipment while underway. A sign-up sheet was passed around to determine dates. Members are invited to come any time during the 4-day week-end. A classroom session will be held during the week before the cruise to familiarize us with the Lifesling equipment and procedures for using it safely. 6 boats signed up. Craig will e-mail the membership when the classroom session has been scheduled.

**Old Business:** The following officers were elected: Commodore Craig Johnston, Vice Commodore Mark Nerczuk, Rear Commodore George Stonecliffe, Treasurer, George Stonecliffe, and Secretary Sue Stonecliffe.



**New Business:**

**Budget:** Dues for 2013-14 are now due. The SIYC Financial Statement was shared along with the Proposed Budget for 2013-14. The membership voted to purchase 10 new burgees at \$30 each. A few members needed new ones too. In order to keep our budget balanced, the membership voted to increase the initiation dues from \$35 to \$50 as of September 1, 2013 to cover the rise in cost of burgees and name tags. The greatest reduction in the budget for next year will be for prizes.

George has been working on getting new reciprocal clubs in the Pacific NW for SIYC. Go to [yachtdestinations.com](http://yachtdestinations.com) for the current list of which clubs have given us this special perk. The website also includes what amenities are available to guests.

CRYA reported at their last meeting that the US Coast Guard has decided to remove the navigational aids formerly placed in the river north of Puget Island and east of Cathlamet. Silting has made navigation there unsafe for most motorized craft.

The meeting adjourned at 8:10 for the dessert potluck and raffle which earned the club \$49.

\*\*\*\*\*

The SIYC Board met at the Daugherty's home on May 2nd with all members present. Ed and Sarah Daugherty, membership chair and ship's store clerk participated as well. Budget items were the main topic of discussion. Ed had researched the cost of new 2-sided burgees as well as screen-printed burgees to give away to yacht clubs we visit. The cost of name-tags had also increased. The officers voted to increase the initiation dues from \$35 to \$50 starting September 1, 2013 in order to cover these increased costs. The membership will be given the opportunity to rescind the new initiation fee according to Article 10.2 of the SIYC By-Laws. Then they discussed items needed for the picnic and organization of the Lifesling training slated for mid-July.

Next Board Meeting: Thursday, May 29th at the Johnston's home.

Respectfully Submitted,  
Sue Stonecliffe, Secretary



*Above: summer cruising on the Columbia River. S/V Sequoia at the guest dock in Hood River, July 2012.*

**SIYC CRUISING BOATS – Locations outside of the Pacific Northwest**

<b>Boat Name</b>	<b>Owners' Names</b>	<b>Location</b>
<i>Adagio</i>	Jeff & Jane Woodward	Sea of Cortez, Mexico
<i>Ahwahnee</i>	Tom & Kathy Edwards	Placida, Florida
<i>Imi Loa</i>	Devon Quinn & Rowan Madix	Alameda, CA
<i>Moonshadow</i>	Richard Sandefur & Anita Melbo	Hawaii
<i>Nashira</i>	Mike Floyd	Crescent City, CA
<i>Perpetua</i>	Pat & Susan Canniff	Mazatlan, Mexico
<i>Pied-A-Mer III</i>	Eric & Pam Sellix	La Cruz de Huanacastle, Mexico
<i>Rolling Thunder</i>	Bruce, Jan & Max Payne	San Carlos, Mexico
<i>Silvergirl</i>	Bob Hulegard & Robin Fouche	Newport Beach, CA

**Member Websites**

- Adagio:** <http://sailblogs.com/member/turningleft/>
- Ahwahnee:** [http://www.sailblogs.com/member/voyage\\_continued/](http://www.sailblogs.com/member/voyage_continued/)
- Julia Max:** <http://www.sailblogs.com/member/juliamax/>
- Perpetua blog:** [http://www.sailblogs.com/member/our\\_journeys/](http://www.sailblogs.com/member/our_journeys/)
- Perpetua Pictures:** [http://imageevent.com/our\\_journeys/](http://imageevent.com/our_journeys/)
- Moonshadow:** <http://www.voyagemoonshadow.blogspot.com/>
- Moontide:** <http://www.svmoontide.com/>
- Pied-a-Mer III** <http://www.sailblogs.com/member/sesesail/>
- Sequoia:** <http://www.svsequoia.com/>

SIYC members : Do you have a website for your boat that isn't listed above ? If so, please get the information to your trusty editor, Barbara Johnston, and we'll make sure your website is included in future issues of the newsletter.



## Other websites of interest to Portland area sailors

<http://www.siyc.org/> Our very own **Sauvie Island Yacht Club**. If you haven't checked out the club website yet, please do so – it's looking really good, and is full of informative articles and spectacular photography by club members.

<http://www.webnautica.us/CRYA/>: **Columbia River Yachting Association** – This is the umbrella organization for Yacht Clubs along the Columbia River – SIYC is a member. See especially their links to all the other yacht clubs' websites, and their calendar of club cruises.

<http://www.oregon.gov/OSMB/pages/index.aspx> **Oregon State Marine Board** – Your source for information related to licensing, safety, boater education, Oregon boating destinations and many other maritime concerns.

<http://www.weather.gov/> The **National Weather Service** – Find out what the weather will be *before* you head out on the water.

<http://threesheetsnw.com/> A Seattle-based website that's chock full of good information about cruising in Puget Sound and farther afield, plus general information that's helpful to any cruiser anywhere.

<http://www.owsa.net/> SIYC women – If an emergency arose while you were out cruising, could you take over from your partner? If not, this is the one for you: **Oregon Women's Sailing Association**. This local organization offers sailing classes (including cruising skills) especially for (and sometimes exclusively for) women.

<http://www.cbsa-asfc.gc.ca/prog/canpass/menu-eng.html> The **Canadian Canpass website** – If you're cruising to Canada, you'll want to know about this permit system.

<http://www.parks.wa.gov/boating/moorage/?subject=permit> Information about mooring permits required for **Washington State Parks** along the Columbia River and elsewhere.



*An SIYC dinghy in Vavau, Tonga.  
S/V Sequoia, 2003*

## ***CRUISING REPORTS***

---

*From Richard Sandefur, S/V Moonshadow*

Hello friends;

While on the Big Island of Hawaii a friend drove us to see Kilauea, a volcano that has been continuously erupting since 1983. My crew who had sailed from Costa Rica left and a local lady agreed to join Moonshadow for the trip to Oahu. We departed Hilo at 9am for an overnight passage of about 110 miles, around the southern end of the island. Just after dark while sailing about a mile offshore, we were treated to the sight of bright red flashes as hot lava from the volcano ran into the sea! Amazing!

We had a great sail and anchored the next morning at Honoluni, a nice little bay with a black sand beach on the southwest side of the big island.

The following morning we headed off to cross the Alenuihaha channel to the island of Lanai, a trip of about 120 miles. I had been warned about the venturi effect of the islands. We had no wind the first twelve hours, then in ten minutes time the wind went from 0 to about 35 and was forward of the beam. I triple reefed the mainsail, rolled up the Yankee and all but a scrap of staysail. For the next six hours we crashed into big seas which occasionally leaped into the cockpit. We hid below and peeked out every few minutes.

Finally, at 3am we got into the lee of Maui and it began to calm down. We came into the nice harbor of Menele Bay on Lanai under sunny skies and light winds. Whew! I'm glad we didn't experience those conditions often on our circumnavigation!

The following day we left to cross another channel, the Kawai, to Oahu. Fortunately this trip was uneventful and we had light winds all the way to Ala Wai marina in Honolulu.



I spent the next few days furiously cleaning in preparation for the arrival of Admiral Anita. She and I spent the next two weeks mostly being tourists on Oahu. We did take Moonshadow out one day. It rained on us which reminded us of what it is like to sail in the Pacific Northwest.

Now that Anita is back in Portland I am once more trolling for crew and preparing Moonshadow for the last leg of about 2,800 miles, home to Oregon, leaving possibly mid- June.

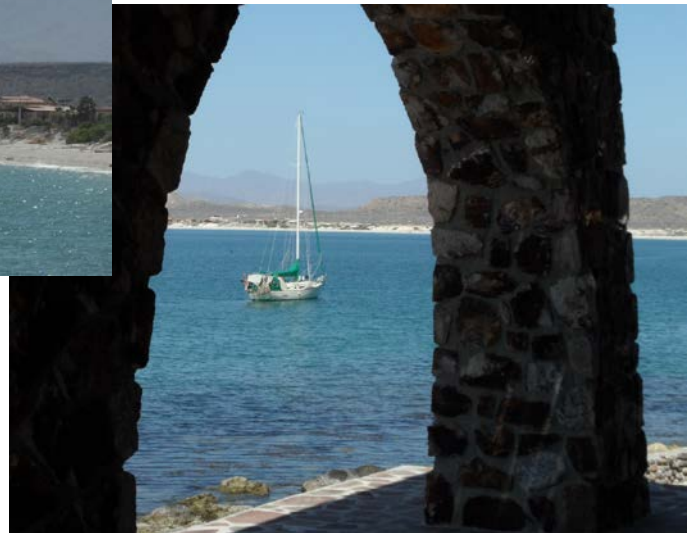
Cheers,  
Richard  
SV Moonshadow

---

*From Jeff & Jane Woodward, S/V Adagio*



This is the airstrip at Punta Chivato. It's almost directly across the Sea of Cortez from San Carlos. There's no town here, just the airstrip, a hotel that is mostly closed, and a row of vacation homes lining the beach.



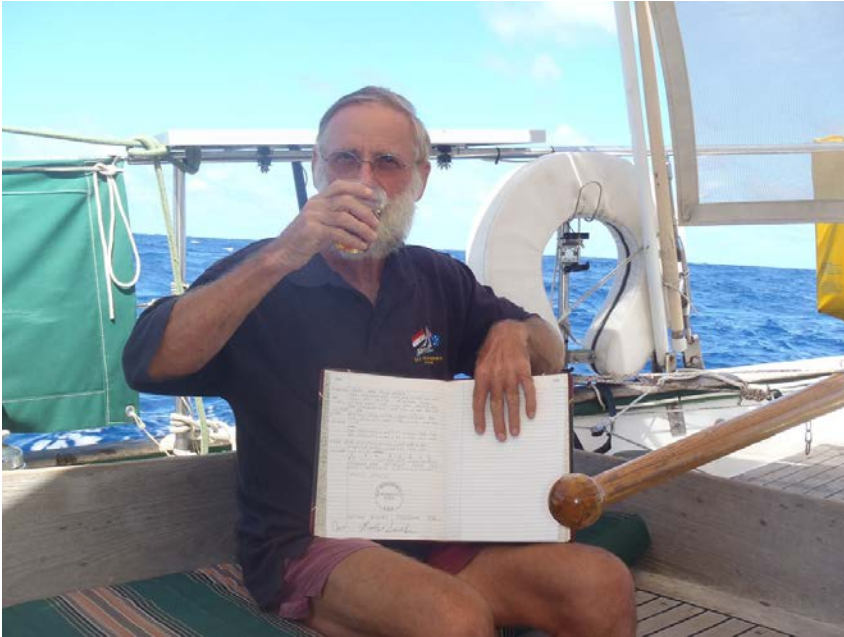
We thought you'd find it interesting to see what a dirt strip in Baja looks like. As far as we know there are no services or fuel at any of the small airports in Baja. Most probably you would have to jerry jug gasoline in from town. There are a lot of pickup trucks coming and going. You could probably get someone to give you a lift to town and back. Pretty sure getting aviation gas would be near impossible.

---



## Let's Stay in Touch with our Cruising Members

*If you enjoyed the stories and pictures from these cruising members of Sauvie Island Yacht Club, please say so. Sometimes the cruisers comment that they feel like they are sending their articles into a black hole, and they never get any feedback. Let's all make an effort to let them know they are appreciated. If you see them, say something. If they are still out cruising, send them an email. If you have questions for them, do ask – it may be the seed for an interesting future report. – Ed.*



*Left: Richard Sandefur, celebrating Moonshadow's circumnavigation, achieved during the recent passage to Hawaii.*

*Below: A Hawaii beach enjoyed by Richard Sandefur & Anita Melbo*

